



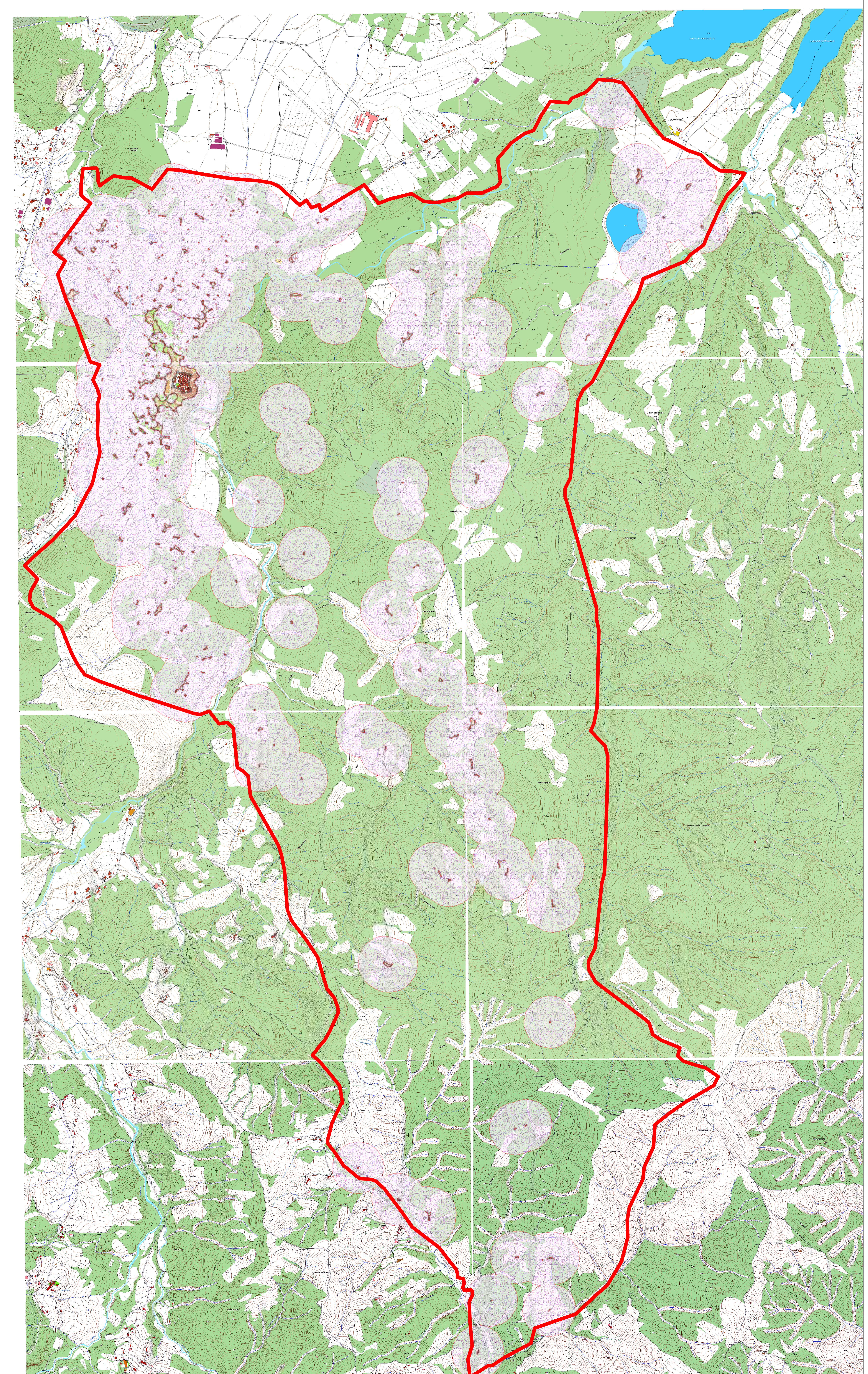
PIANO DI PROTEZIONE CIVILE

TAV 6.0 Perimetrale 200+Interfaccia 50
1/10.000


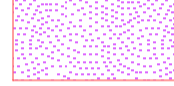

Il Redattore
Arch. Salvatore BRUNO

Il Responsabile del Procedimento
Geom. Vincenzo SCARANO

Il Sindaco
Dott. Arch. Giovanni TEMPONE



Legenda

-  confini comunali
-  sarconi_perimetrale200
-  sarconi_interfaccia50